

**R4228A,B,D; R8228A,B,D  
 SWITCHING RELAYS**

**APPLICATION**

The R4228 and R8228 are general purpose relays for use in refrigeration and air conditioning equipment, appliances, vending machines and other applications requiring general purpose switching.

Switching configurations and contact ratings are as follows:

R4228A, R8228A—power pole, spst switching with double quick-connects (16 amps full load at 120V ac).

R4228B, R8228B—power pole, spdt switching with double quick-connects (16 amps full load at 120V ac).

R4228D, R8228D—power pole, dpst switching, normally open contacts (25 amps resistive at 277V ac).

R4228 models have line voltage coils, and R8228 models have low voltage coils.

**TERMINALS:**

R4228A,B; R8228A,B—double quick-connects on poles, double quick-connect on coil terminals.

R4228D; R8228D—single quick-connect on poles, double quick-connect on coil terminals.

**CONTACT RATINGS:**

R4228A,B R8228A,B	120V AC	240V AC	277V AC	480V AC
Full Load	16	12		5
Locked Rotor	96	72		30
Horsepower	1	2		1-1/2
Resistive <sup>a</sup>			25	15
R4228D R8228D				
Resistive only <sup>a</sup>			25	10

<sup>a</sup>0.75 power factor load.

**COIL RATINGS:** All coils meet Underwriters' Laboratories, Inc. requirements for Class B coils. If coil voltages other than those listed below are desired, contact your local Honeywell representative for additional information.

	24V ACa	120, 208/240, 277, 480V AC
Inrush va (maximum)	20.0	20
Sealed va (maximum)	9.5	10

<sup>a</sup>Coils are rated for 50/60 Hz. Data is at 60 Hz.

Current draw: 0.4 amp at 24V ac.

Pickup Voltage: 75 percent of rated coil voltage.

**ACCESSORIES:**

1. Case and Cover Assembly—135872A.
2. Plug-in Receptacle and Retaining Bail—4074BVJ.
3. Receptacle only—Part No. 135959.
4. Bail only—Part No. 135887.
5. Adapters for converting 1/4 inch quick-connects to No. 6 screw terminals (bag or eight)—137881A.

**INSTALLATION**

**CAUTION**

1. Installer must be a trained, experienced serviceman.
2. Disconnect power supply before beginning installation.
3. Always conduct a thorough checkout when installation is complete.

**LOCATION**

Mount the relay on a flat, solid surface as close as possible to the equipment being controlled. The relay may be mounted in any position except with the terminals pointed down. Secure in place with 2 screws through holes or slots in the mounting base. See Fig. 1 for mounting dimensions.

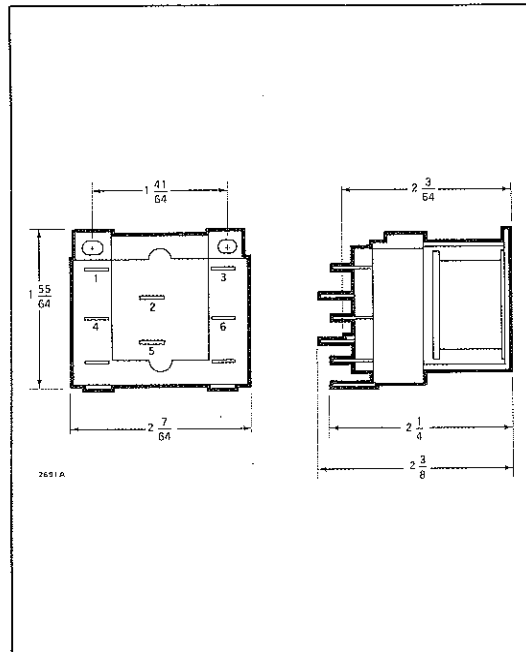


Fig. 1—Dimensions of the R4228 and R8228 Relay.

## WIRING:

### CAUTION

1. Disconnect power supply before wiring to prevent electrical shock and equipment damage.
2. All wiring must comply with local codes and ordinances.
3. Do not exceed contact and coil ratings when wiring into system.

Crimp female quick-connects to the system wires and attach to the male quick-connect terminals of the relay. The relay has molded terminal numbers and circuit diagram for easy identification when wiring. Fig. 2 shows the location and circuits of all models.

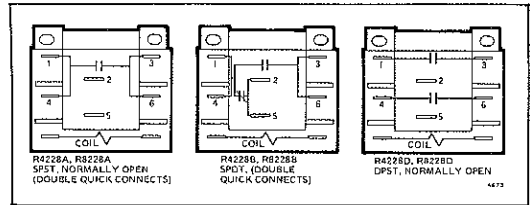


Fig. 2—Internal schematic and terminal location.

## CHECKOUT

Operate the relay and controlled equipment to make sure that the relay pulls in when the coil is energized and that controlled equipment operates as intended.